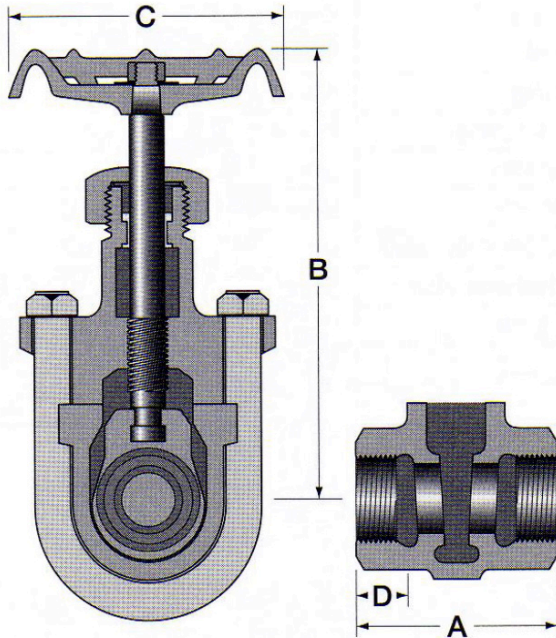


**FIG. CGV-254T:**

**CAST IRON CLIP GATE VALVE THREADED ENDS RISING STEM**



**Features:**

- Inside screw, rising stem.
- Threaded ends per ANSI B2.1

**Materials List:**

| No. | Part Name     | Specification   |                   |
|-----|---------------|-----------------|-------------------|
| 1   | Body          | 1/4" - 1"       | A536 Ductile iron |
|     |               | 1 1/4" - 4"     | A126B Cast iron   |
| 2   | Bonnet        | 1/4" - 1"       | A536 Ductile iron |
|     |               | 1 1/4" - 4"     | A126B Cast iron   |
| 3   | Disc          | 1/4" - 1"       | A536 Ductile iron |
|     |               | 1 1/4" - 4"     | A126B Cast iron   |
| 4   | Stem          | 410SS           |                   |
| 5   | Gland         | 410SS           |                   |
| 6   | Gasket        | Asbestos free   |                   |
| 7   | Nut           | A307B CIB steel |                   |
| 8   | Packing       | Asbestos free   |                   |
| 9   | Handwheel     | A216B Cast iron |                   |
| 10  | Handwheel nut | A307B CIB steel |                   |
| 11  | Name plate    | Aluminum        |                   |
| 12  | U Bolt        | A307B CIB steel |                   |

**Note:**

Also available with bronze trim (Fig.254B)

**None-shock Working Pressure:**

- 1/4" - 1": 150 psi steam - 225 CWP
- 1 1/4" - 4": 125 psi steam - 175 CWP

**Dimensions:**

| Size |     | A    |     | B (open) |     | C    |     | D    |    | Weight |       |
|------|-----|------|-----|----------|-----|------|-----|------|----|--------|-------|
| in   | mm  | in   | mm  | in       | mm  | in   | mm  | in   | mm | lbs    | kgs   |
| 2    | 50  | 3.70 | 94  | 11.46    | 291 | 3.76 | 95  | 0.75 | 19 | 10     | 4.54  |
| 3    | 80  | 5.83 | 148 | 18.23    | 363 | 6.00 | 152 | 0.91 | 23 | 24     | 10.88 |
| 4    | 100 | 5.94 | 151 | 18.54    | 471 | 9.00 | 229 | 0.98 | 25 | 48     | 21.77 |

**FIG. 272-CI-125:**

**CLASS 125 OS&Y GATE VALVE FLANGED ENDS BOLTED BONNET  
BRONZE TRIM**

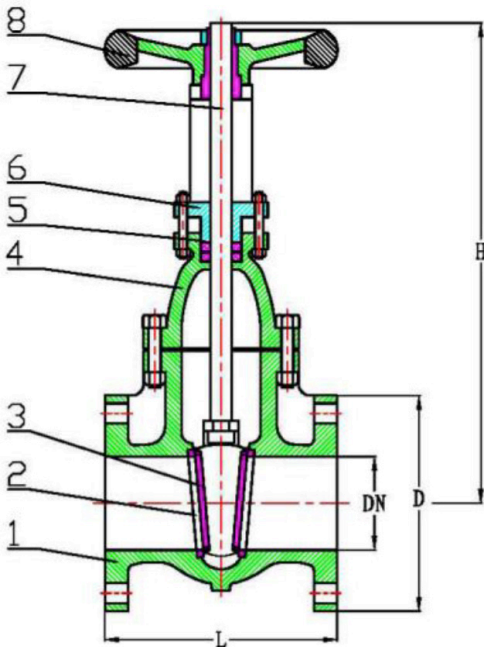


**Features:**

- Flange dimensions: ANSI B16.1
- Face-to-Face dimensions: ANSI B16.10
- Testing & Design: MSS-SP-70
- Working pressure: 125LB/150LB
- Working environment: Water, Oil, Steam
- Working temperature: ≤ 200°C

**Materials List:**

| No. | Part Name      | Specification       |
|-----|----------------|---------------------|
| 1   | Body           | ASTM A126B          |
| 2   | Seat seal ring | Bronze              |
| 3   | Disc           | ASTM A126B with SS  |
| 4   | Bonnet         | ASTM A126B          |
| 5   | Packing        | Graphite            |
| 6   | Gland          | Ductile Iron (A395) |
| 7   | Stem           | SS(410)             |
| 8   | Handwheel      | ASTM A126B          |



**Dimensions:**

| Size |     | L    |     | H     |      | D    |     |
|------|-----|------|-----|-------|------|------|-----|
| in   | mm  | in   | mm  | in    | mm   | in   | mm  |
| 2    | 50  | 7    | 178 | 10.43 | 265  | 6    | 152 |
| 2 ½  | 65  | 7 ½  | 190 | 11.00 | 280  | 7    | 178 |
| 3    | 80  | 8    | 203 | 12.20 | 310  | 7 ½  | 191 |
| 4    | 100 | 9    | 229 | 16.14 | 410  | 9    | 229 |
| 6    | 150 | 10 ½ | 267 | 22.05 | 560  | 11   | 279 |
| 8    | 200 | 11 ½ | 292 | 27.95 | 710  | 13 ½ | 343 |
| 10   | 250 | 13   | 330 | 34.84 | 885  | 16   | 406 |
| 12   | 300 | 14   | 356 | 43.31 | 1100 | 19   | 483 |
| 14   | 350 | 15   | 381 | 52.28 | 1328 | 21   | 533 |

**FIG. 278-CI-125:**

**CLASS 125 SWING CHECK VALVE FLANGED ENDS BOLTED COVER  
BRONZE TRIM**

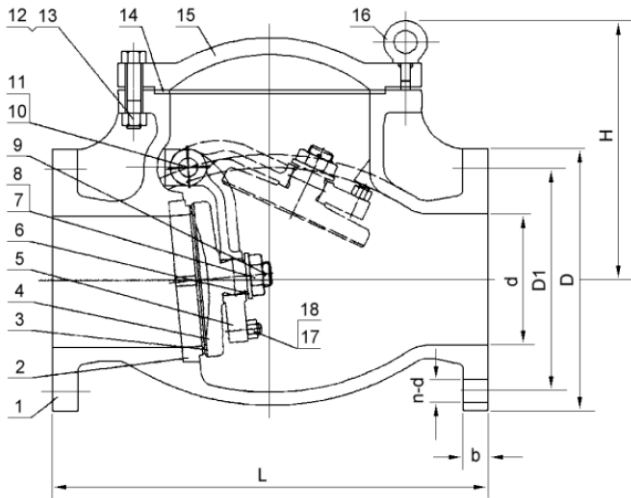


**Features:**

- Flange dimensions: ANSI B16.1
- Face-to-Face dimensions: ANSI B16.10
- Testing & Design: MSS-SP-71

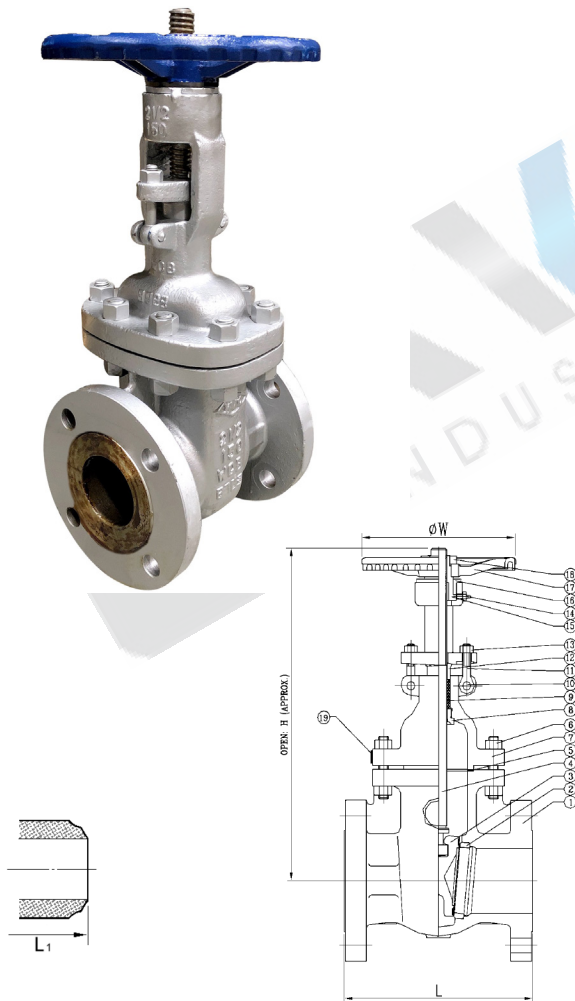
**Materials List:**

| No. | Part Name       | Specification    |
|-----|-----------------|------------------|
| 1   | Body            | ASTM A126B       |
| 2   | Seat ring       | ASTM B62         |
| 3   | Disc seal ring  | ASTM B62         |
| 4   | Disc            | ASTM A126B       |
| 5   | Hinge           | ASTM A216 WCB    |
| 6   | Washer          | Carbon steel     |
| 7   | Nut             | Carbon steel     |
| 8   | Stud            | Carbon steel     |
| 9   | Split pin       | 304SS            |
| 10  | Hinge pin       | 13Cr             |
| 11  | Plug            | ASTM A536        |
| 12  | Bolt            | ASTM A307        |
| 13  | Nut             | Carbon steel     |
| 14  | Cover gasket    | Graphite & steel |
| 15  | Cover           | ASTM A126B       |
| 16  | Eye screw       | Carbon steel     |
| 17  | Adjusting screw | Carbon steel     |
| 18  | Nut             | Carbon steel     |



**Dimensions:**

| Size  |     | L      |      | D      |     | D1     |     | b       |       | n-d        |           | H   |      | Weight |  |
|-------|-----|--------|------|--------|-----|--------|-----|---------|-------|------------|-----------|-----|------|--------|--|
| in    | mm  | in     | mm   | in     | mm  | in     | mm  | in      | mm    | in         | in        | mm  | lbs  | kgs    |  |
| 2     | 50  | 8      | 203  | 6      | 152 | 4 3/4  | 121 | 5/8     | 15.90 | 4 - 3/4    | 6         | 152 | 30   | 13.6   |  |
| 2 1/2 | 65  | 8 1/2  | 216  | 7      | 178 | 5 1/2  | 140 | 1 1/16  | 17.50 | 4 - 3/4    | 6 3/8     | 162 | 50   | 22.7   |  |
| 3     | 80  | 9 1/2  | 241  | 7 1/2  | 190 | 6      | 152 | 3/4     | 19.00 | 4 - 3/4    | 6 7/8     | 175 | 55   | 25     |  |
| 4     | 100 | 11 1/4 | 292  | 9      | 229 | 7 1/2  | 191 | 1 5/16  | 23.80 | 8 - 3/4    | 8 5/8     | 219 | 86   | 39.1   |  |
| 5     | 125 | 13     | 330  | 10     | 254 | 8 1/2  | 216 | 1 5/16  | 23.80 | 8 - 7/8    | 8 7/8     | 225 | 130  | 59.1   |  |
| 6     | 150 | 14     | 356  | 11     | 279 | 9 1/2  | 241 | 1       | 25.40 | 8 - 7/8    | 10        | 254 | 154  | 70     |  |
| 8     | 200 | 19 1/2 | 495  | 13 1/2 | 343 | 11 3/4 | 298 | 1 1/8   | 28.60 | 8 - 7/8    | 11 3/4    | 298 | 279  | 127    |  |
| 10    | 250 | 24 1/2 | 622  | 16     | 406 | 14 1/4 | 362 | 1 3/16  | 30.20 | 12 - 1     | 14 1 1/16 | 376 | 407  | 185    |  |
| 12    | 300 | 27 1/2 | 699  | 19     | 483 | 17     | 432 | 1 1/4   | 31.80 | 12 - 1     | 16 1/8    | 410 | 594  | 270    |  |
| 14    | 350 | 31     | 787  | 21     | 533 | 18 3/4 | 476 | 1 3/8   | 34.90 | 12 - 1 1/8 | 17 1/2    | 445 | 829  | 377    |  |
| 16    | 400 | 36     | 914  | 23 1/2 | 597 | 21 1/4 | 540 | 1 7/16  | 36.50 | 12 - 1 1/8 | 19 3/4    | 502 | 1148 | 522    |  |
| 18    | 450 | 36     | 914  | 25     | 635 | 22 3/4 | 578 | 1 9/16  | 39.70 | 16 - 1 1/4 | 27 1/2    | 699 | 1727 | 785    |  |
| 20    | 500 | 40     | 1016 | 27 1/2 | 699 | 25     | 635 | 1 11/16 | 42.90 | 20 - 1 1/4 | 29 1/4    | 743 | 2596 | 1180   |  |
| 24    | 600 | 48     | 1219 | 32     | 813 | 29 1/2 | 749 | 1 7/8   | 47.60 | 20 - 1 3/8 | 33 1/4    | 845 | 3520 | 1600   |  |

**FIG. 272-CS-150:**
**CLASS 150 FLANGED ENDS BOLTED BONNET WCB BODY & BONNET**

**Features:**

- Flange dimensions: ANSI B16.5
- Butt weld end dimensions: ANSI B16.25
- Face-to-Face dimensions: ANSI B16.10
- Testing: API 598
- Design: API 600

**Materials List:**

| No. | Part Name      | Specification          |
|-----|----------------|------------------------|
| 1   | Body           | A216 WCB               |
| 2   | Seat ring      | A105 HF                |
| 3   | Wedge/disc     | WCB, 13Cr Overlay      |
| 4   | Stem           | A276 – 410, 420        |
| 5   | Gasket         | Metal jacketed Grafoil |
| 6   | Stud/nut       | B7/2H                  |
| 7   | Bonnet         | A216 WCB               |
| 8   | Back seat      | A276 – 410, 420        |
| 9   | Packing        | Grafoil                |
| 10  | Pin            | Carbon steel           |
| 11  | Eye bolt/nut   | B7/2H                  |
| 12  | Gland          | A276 – 410, 420        |
| 13  | Gland flange   | Carbon steel           |
| 14  | Grease fitting | Brass/steel            |
| 15  | Stem nut       | ASTM B-148             |
| 16  | Retaining nut  | Carbon steel           |
| 17  | Handwheel      | Ductile iron           |
| 18  | Handwheel nut  | Carbon steel           |
| 19  | Nameplate      | 321SS                  |

**Note:**

Other body materials and trims are available upon request

**Dimensions:**

| Size |     | L (RF) |     | L1 (BW) |      | H (open) |      | W  |     | Weight |      |
|------|-----|--------|-----|---------|------|----------|------|----|-----|--------|------|
| in   | mm  | in     | mm  | in      | mm   | in       | mm   | in | mm  | lbs    | kgs  |
| 2    | 50  | 7.00   | 178 | 8.50    | 216  | 16.13    | 409  | 8  | 220 | 47     | 21   |
| 2 ½  | 65  | 7.50   | 190 | 9.50    | 241  | 18.50    | 472  | 9  | 240 | 56     | 25   |
| 3    | 80  | 8.00   | 203 | 11.13   | 283  | 21.00    | 532  | 10 | 250 | 75     | 34   |
| 4    | 100 | 9.00   | 229 | 12.00   | 305  | 24.13    | 612  | 11 | 280 | 115    | 52   |
| 5    | 125 | 10.00  | 254 | 15.00   | 381  | 28.00    | 710  | 12 | 300 | 151    | 69   |
| 6    | 150 | 10.50  | 267 | 15.88   | 403  | 31.75    | 806  | 13 | 320 | 197    | 90   |
| 8    | 200 | 11.50  | 292 | 16.50   | 519  | 39.00    | 990  | 14 | 350 | 289    | 131  |
| 10   | 250 | 13.00  | 330 | 18.00   | 457  | 46.50    | 1186 | 16 | 400 | 450    | 205  |
| 12   | 300 | 14.00  | 356 | 19.75   | 502  | 55.25    | 1405 | 18 | 450 | 640    | 291  |
| 14   | 350 | 15.00  | 381 | 22.50   | 572  | 63.50    | 1615 | 19 | 500 | 860    | 391  |
| 16   | 400 | 16.00  | 406 | 24.00   | 610  | 71.25    | 1811 | 23 | 600 | 1190   | 541  |
| 18   | 450 | 17.00  | 432 | 26.00   | 660  | 78.25    | 1986 | 25 | 650 | 1490   | 677  |
| 20   | 500 | 19.00  | 457 | 28.00   | 711  | 87.00    | 2210 | 27 | 700 | 1885   | 857  |
| 24   | 600 | 20.00  | 508 | 32.00   | 813  | 106.25   | 2698 | 33 | 850 | 2780   | 1264 |
| 28   | 700 | 24.00  | 610 | 36.00   | 914  | 119.50   | 3030 | 33 | 850 | 1931   | 1765 |
| 30   | 750 | 24.00  | 610 | 36.00   | 914  | 130.50   | 3317 | 36 | 900 | 2380   | 2028 |
| 32   | 800 | 26.00  | 660 | 38.00   | 965  | 137.25   | 3487 |    |     | 2490   | 2280 |
| 36   | 900 | 28.00  | 711 | 40.00   | 1016 | 150.50   | 3825 |    |     | 3600   | 3080 |

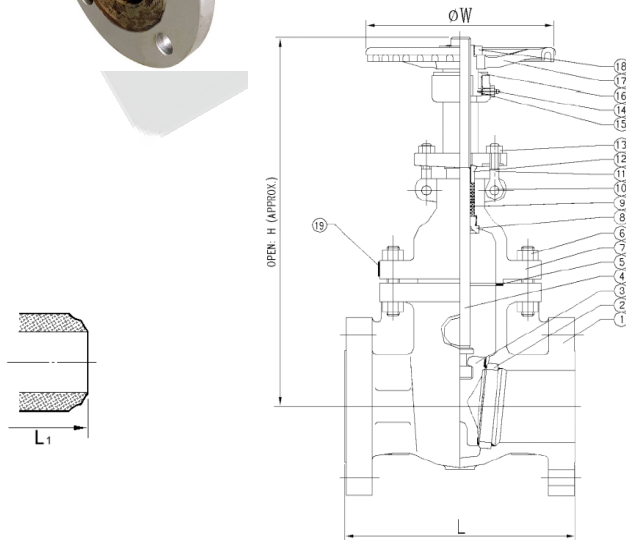
**FIG. 272-CS-300:**
**CLASS 300 FLANGED ENDS BOLTED BONNET WCB BODY & BONNET**

**Features:**

- Flange dimensions: ANSI B16.5
- Buttweld end dimensions: ANSI B16.25
- Face-to-Face dimensions: ANSI B16.10
- Testing: API 598
- Design: API 600
- Threaded or Welded Seat Ring
- Flexible Wedge

**Materials List:**

| No. | Part Name      | Specification          |
|-----|----------------|------------------------|
| 1   | Body           | A216 WCB               |
| 2   | Seat ring      | A105 HF                |
| 3   | Wedge/disc     | WCB, 13Cr Overlay      |
| 4   | Stem           | A276 – 410, 420        |
| 5   | Gasket         | Metal jacketed Grafoil |
| 6   | Stud/nut       | B7/2H                  |
| 7   | Bonnet         | A216 WCB               |
| 8   | Back seat      | A276 – 410, 420        |
| 9   | Packing        | Grafoil                |
| 10  | Pin            | Carbon steel           |
| 11  | Eye bolt/nut   | B7/2H                  |
| 12  | Gland          | A276 – 410, 420        |
| 13  | Gland flange   | Carbon steel           |
| 14  | Grease fitting | Brass/steel            |
| 15  | Stem nut       | ASTM B-148             |
| 16  | Retaining nut  | Carbon steel           |
| 17  | Handwheel      | Ductile iron           |
| 18  | Handwheel nut  | Carbon steel           |
| 19  | Nameplate      | 321SS                  |


**Note:**

Other body materials and trims are available upon request

**Dimensions:**

| Size |     | L (RF) |      | L1 (BW) |      | H (open) |      | W  |     | Weight (RF) |      | Weight (BW) |      |
|------|-----|--------|------|---------|------|----------|------|----|-----|-------------|------|-------------|------|
| in   | mm  | in     | mm   | in      | mm   | in       | mm   | in | mm  | lb          | kg   | lb          | kg   |
| 2    | 50  | 8 ½    | 216  | 8 ½     | 216  | 15.75    | 400  | 8  | 220 | 75          | 34   | 57          | 26   |
| 2 ½  | 65  | 9 ½    | 241  | 9 ½     | 241  | 18.75    | 477  | 9  | 240 | 85          | 39   | 75          | 34   |
| 3    | 80  | 11.13  | 283  | 11.13   | 283  | 21.38    | 543  | 10 | 250 | 125         | 57   | 104         | 47   |
| 4    | 100 | 12     | 305  | 12.00   | 305  | 25.63    | 650  | 11 | 280 | 176         | 80   | 150         | 68   |
| 5    | 125 | 15     | 381  | 15.00   | 381  | 30.25    | 770  | 12 | 300 | 240         | 109  | 170         | 77   |
| 6    | 150 | 15.88  | 403  | 15.88   | 403  | 34.50    | 880  | 13 | 320 | 327         | 149  | 260         | 118  |
| 8    | 200 | 16 ½   | 419  | 16 ½    | 419  | 40.75    | 1037 | 14 | 350 | 521         | 237  | 430         | 195  |
| 10   | 250 | 18     | 457  | 18.00   | 457  | 50.25    | 1275 | 16 | 400 | 750         | 341  | 597         | 271  |
| 12   | 300 | 19 ¾   | 502  | 19 ¾    | 502  | 56.63    | 1438 | 18 | 450 | 1100        | 500  | 952         | 432  |
| 14   | 350 | 30     | 762  | 30.00   | 762  | 65.00    | 1650 | 19 | 500 | 1640        | 745  | 1312        | 596  |
| 16   | 400 | 33     | 838  | 33.00   | 838  | 72.50    | 1840 | 23 | 600 | 3442        | 1110 | 1870        | 850  |
| 18   | 450 | 36     | 914  | 36.00   | 914  | 79.88    | 2030 | 25 | 650 | 2990        | 1359 | 2260        | 1027 |
| 20   | 500 | 39     | 991  | 39.00   | 991  | 88.25    | 2240 | 27 | 700 | 3785        | 1720 | 3219        | 1463 |
| 24   | 600 | 45     | 1143 | 45.00   | 1143 | 114.25   | 2900 | 33 | 850 | 6160        | 2800 | 5737        | 2607 |

**FIG. DC-700:**

**WAFER STYLE DUAL DOOR CHECK VALVE**



**Features:**

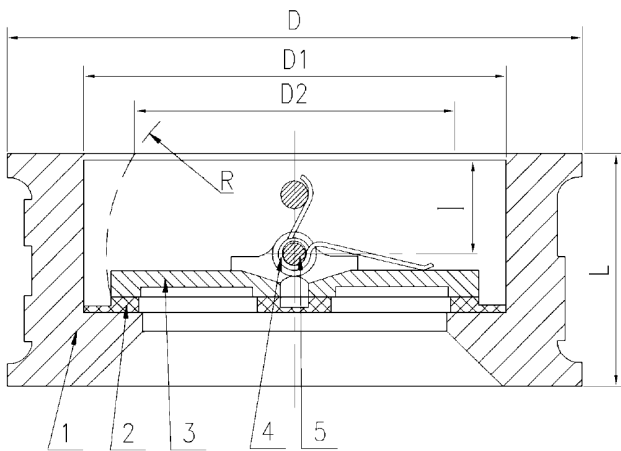
- General Design: ANSI Class 125 (EN 12334) & API 594 Working Pressure: ASME B16.34 (EN 12334)
- Flange mate: ANSI B16.1 & B16.5
- Face to face: ISO 5752-82
- Valve Testing: API 598

**Materials List:**

| No. | Part Name | Specification     |
|-----|-----------|-------------------|
| 1   | Body      | A126B Cast Iron   |
|     |           | A536 Ductile Iron |
| 2   | Seat      | NBR, EPDM, Viton  |
| 3   | Disc      | A536 Ductile Iron |
|     |           | CF8M              |
| 4   | Spring    | A276 431SS        |
| 5   | Stem      | 416SS / 316SS     |

**Note:**

Working Temperature: -10° C to 150° C.

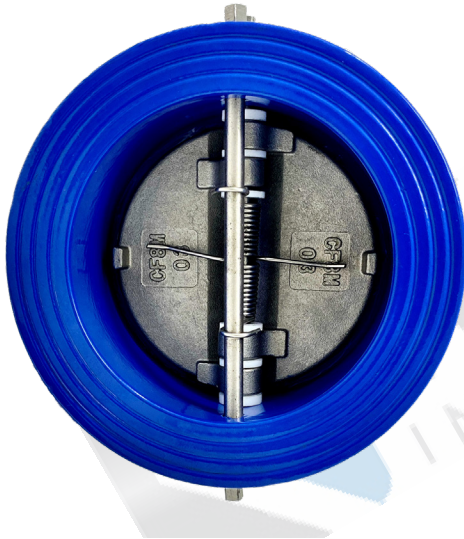


**Dimensions:**

| Size |     | D     |     | D1    |     | D2    |        | L    |     | R    |        | I    |    | Weight |        |
|------|-----|-------|-----|-------|-----|-------|--------|------|-----|------|--------|------|----|--------|--------|
| in   | mm  | in    | mm  | in    | mm  | in    | mm     | in   | mm  | in   | mm     | in   | mm | lbs    | kgs    |
| 2    | 50  | 4.20  | 107 | 2.56  | 65  | 1.70  | 43.30  | 1.69 | 43  | 1.13 | 28.80  | 0.75 | 19 | 3.30   | 1.50   |
| 2 ½  | 65  | 5.00  | 127 | 3.15  | 80  | 2.37  | 60.20  | 1.81 | 46  | 1.13 | 28.80  | 0.79 | 20 | 5.28   | 2.40   |
| 3    | 80  | 5.59  | 142 | 3.70  | 94  | 2.61  | 66.40  | 2.53 | 64  | 1.42 | 36.10  | 1.10 | 28 | 7.92   | 3.60   |
| 4    | 100 | 6.38  | 162 | 4.60  | 117 | 3.57  | 90.80  | 2.53 | 64  | 1.7  | 43.40  | 1.06 | 27 | 12.54  | 5.70   |
| 5    | 125 | 7.56  | 192 | 5.70  | 145 | 4.60  | 116.90 | 2.76 | 70  | 2.00 | 52.60  | 1.18 | 30 | 16.00  | 7.30   |
| 6    | 150 | 8.58  | 218 | 6.70  | 170 | 5.69  | 144.60 | 2.99 | 76  | 2.59 | 65.70  | 1.22 | 31 | 19.80  | 9.00   |
| 8    | 200 | 10.75 | 273 | 8.80  | 224 | 7.80  | 198.20 | 3.50 | 89  | 3.09 | 78.60  | 1.30 | 33 | 37.40  | 17.00  |
| 10   | 250 | 12.91 | 328 | 10.40 | 265 | 9.20  | 233.70 | 4.49 | 114 | 4.11 | 104.40 | 1.97 | 50 | 57.20  | 26.00  |
| 12   | 300 | 14.88 | 378 | 12.20 | 310 | 10.98 | 279.00 | 4.49 | 114 | 5.00 | 127.00 | 1.69 | 43 | 81.40  | 37.00  |
| 14   | 350 | 17.24 | 438 | 14.20 | 360 | 12.91 | 327.00 | 5.00 | 127 | 5.83 | 148.00 | 1.77 | 45 | 120.80 | 54.90  |
| 16   | 400 | 19.25 | 489 | 16.00 | 410 | 14.80 | 375.00 | 5.50 | 140 | 6.79 | 172.00 | 2.04 | 52 | 171.60 | 78.00  |
| 18   | 450 | 21.85 | 555 | 17.70 | 450 | 16.30 | 414.00 | 5.98 | 152 | 7.77 | 197.00 | 2.28 | 58 | 261.80 | 119.00 |
| 20   | 500 | 23.39 | 594 | 19.90 | 505 | 18.15 | 468.00 | 5.98 | 152 | 8.57 | 218.00 | 2.28 | 58 | 268.00 | 122.00 |
| 24   | 600 | 27.56 | 700 | 24.60 | 624 | 22.42 | 570.00 | 7.00 | 178 | 9.49 | 241.00 | 0.12 | 3  | 383.00 | 174.00 |

FIG. DC-710E:

## WAFER STYLE DUAL DOOR CHECK VALVE



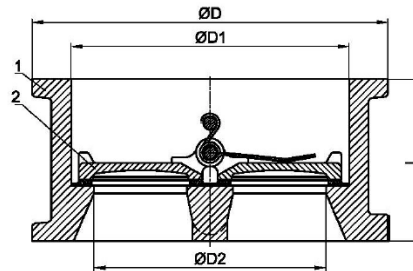
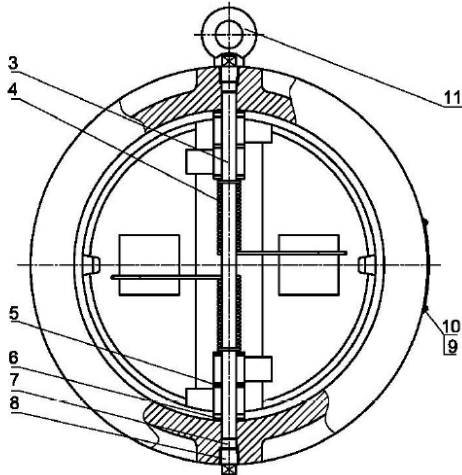
### Features:

- General Design: ANSI Class 125 (EN 12334) & API 594 Working Pressure: ASME B16.34 (EN 12334)
- Flange mate: ANSI B16.1 & B16.5
- Face to face: ISO 5752-82
- Valve Testing: API 598

|                  |                        |
|------------------|------------------------|
| Working Pressure | 150 psi / 200 psi      |
| Valve Connection | ASME B 16.42 CLASS 150 |

### Materials List:

| No. | Part Name  | Specification |
|-----|------------|---------------|
| 1   | Body       | DI + EPDM     |
| 2   | Disc       | CF8M          |
| 3   | Stem       | A276 S316 00  |
| 4   | Spring     | A276 S316 00  |
| 5   | Washer     | PTFE          |
| 6   | Gasket     | PTFE          |
| 7   | Sealing    | EPDM          |
| 8   | Plug       | ASTM 1035     |
| 9   | Name Plate | A276 S304 00  |
| 10  | Revet      |               |
| 11  | Life Ring  | ASTM 1035v    |



### Dimensions:

| DN  | ØD  | ØD1 | ØD2 | L   |
|-----|-----|-----|-----|-----|
| 50  | 104 | 65  | 43  | 54  |
| 65  | 123 | 80  | 59  | 60  |
| 80  | 135 | 94  | 70  | 67  |
| 100 | 174 | 117 | 88  | 67  |
| 125 | 196 | 145 | 115 | 83  |
| 150 | 221 | 170 | 134 | 95  |
| 200 | 279 | 218 | 182 | 127 |
| 250 | 339 | 265 | 220 | 140 |
| 300 | 409 | 310 | 260 | 181 |
| 350 | 448 | 375 | 313 | 184 |
| 400 | 512 | 416 | 350 | 191 |
| 450 | 547 | 468 | 398 | 203 |
| 500 | 604 | 514 | 445 | 213 |
| 600 | 714 | 618 | 538 | 222 |

**FIG. DC-750:**

**CLASS 150 WAFER STYLE DUAL DOOR**

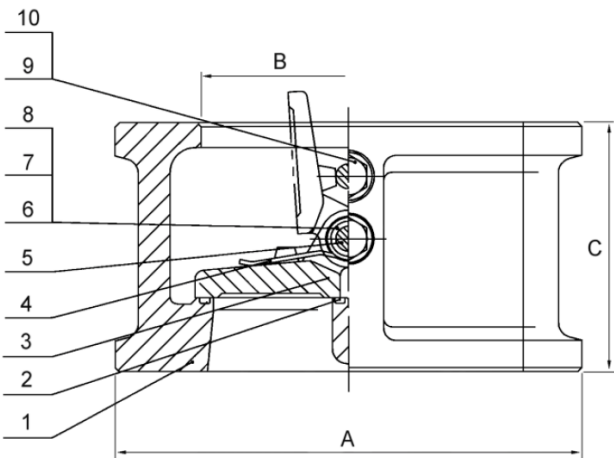


**Features:**

- Economical, lightweight, compact design – significantly lighter and less expensive than comparable swing check valves.
- Easy to install and maintain.
- Smooth, spring assisted closing reduces water hammer.
- Long-legged springs allow plates to open/close without seat scrubbing.
- Rugged Inconel X-750 spring is standard in all steel & stainless steel valves.
- Innovative 316SS seat, standard in all WCB metal seated valves, combined with standard 316SS plates provides a true all stainless steel seating area.
- All WCB & 316SS valves conform to NACE MR-01-75. Manufactured to API 594 & tested to API 598.

**Materials List:**

| No. | Part Name        | WCB/316SS      | 316SS/316SS    |
|-----|------------------|----------------|----------------|
| 1   | Body             | A216 - WCB     | A351 CF8M      |
| 2   | Seat             | 316SS or Viton | 316SS or Viton |
| 3   | Disc             | 316SS          | 316SS          |
| 4   | Spring           | INCONEL X-750  | INCONEL X-750  |
| 5   | Pin shaft        | 316SS          | 316SS          |
| 6   | End hold ring    | 316SS          | 316SS          |
| 7   | Centre hold ring | 316SS          | 316SS          |
| 8   | Spring seat      | 316SS          | 316SS          |
| 9   | Washer           | 316SS          | 316SS          |
| 10  | Screw            | 316SS          | 316SS          |



**Note:**

Valve must be installed with disc hinge pin in the vertical position, to ensure proper operation

**Dimensions:**

| Size |    | Class | B     |       | A     |     | C     |       | Weight |       |
|------|----|-------|-------|-------|-------|-----|-------|-------|--------|-------|
| in   | mm |       | in    | mm    | in    | mm  | in    | mm    | lb     | kg    |
| 2    | 50 | 150   | 2.375 | 60.30 | 4.125 | 105 | 2.375 | 60.50 | 6      | 2.70  |
|      |    | 300   | 2.375 | 60.30 | 4.125 | 111 | 2.375 | 60.50 | 7      | 3.20  |
|      |    | 600   | 2.375 | 60.30 | 4.375 | 111 | 2.375 | 60.50 | 7      | 3.20  |
|      |    | 900   | 2.375 | 60.30 | 4.375 | 143 | 2.75  | 69.85 | 14     | 6.40  |
|      |    | 1500  | 2.375 | 60.30 | 5.625 | 143 | 2.75  | 69.85 | 14     | 6.40  |
|      |    | 2500  | 2.375 | 60.30 | 5.75  | 146 | 2.75  | 69.85 | 15     | 6.80  |
| 2 ½  | 65 | 150   | 2.875 | 73.00 | 4.875 | 124 | 2.62  | 66.55 | 10     | 4.50  |
|      |    | 300   | 2.875 | 73.00 | 5.125 | 130 | 2.62  | 66.55 | 11     | 5.00  |
|      |    | 600   | 2.875 | 73.00 | 5.125 | 130 | 2.62  | 66.55 | 11     | 5.00  |
|      |    | 900   | 2.875 | 73.00 | 6.50  | 165 | 3.25  | 83.00 | 16     | 7.30  |
|      |    | 1500  | 2.875 | 73.00 | 6.50  | 165 | 3.25  | 83.00 | 16     | 7.30  |
|      |    | 2500  | 2.875 | 73.00 | 6.625 | 168 | 3.25  | 83.00 | 22     | 10.00 |

### Dimensions:

| Size |     | Class | B     |        | A     |         | C     |        | Weight |        |
|------|-----|-------|-------|--------|-------|---------|-------|--------|--------|--------|
| in   | mm  |       | in    | mm     | in    | mm      | in    | mm     | lb     | kg     |
| 3    | 80  | 150   | 3.50  | 88.80  | 5.375 | 137.00  | 2.875 | 73.15  | 13     | 5.90   |
|      |     | 300   | 3.50  | 88.80  | 5.875 | 149.00  | 2.875 | 73.15  | 15     | 6.80   |
|      |     | 600   | 3.50  | 88.80  | 5.875 | 149.00  | 2.875 | 73.15  | 15     | 6.80   |
|      |     | 900   | 3.50  | 88.80  | 6.625 | 168.00  | 3.25  | 82.55  | 24     | 10.90  |
|      |     | 1500  | 3.50  | 88.80  | 6.875 | 174.60  | 3.25  | 82.55  | 25     | 11.30  |
|      |     | 2500  | 3.50  | 88.80  | 7.75  | 197.00  | 3.375 | 85.85  | 31     | 14.10  |
| 4    | 100 | 150   | 4.50  | 114.80 | 6.875 | 175.00  | 2.875 | 73.15  | 17     | 7.70   |
|      |     | 300   | 4.50  | 114.80 | 7.125 | 181.00  | 2.875 | 73.15  | 18     | 8.20   |
|      |     | 600   | 4.50  | 114.80 | 7.625 | 194.00  | 3.12  | 79.25  | 26     | 11.80  |
|      |     | 900   | 4.50  | 114.80 | 8.125 | 206.40  | 4.00  | 101.60 | 40     | 18.10  |
|      |     | 1500  | 4.50  | 114.80 | 8.25  | 209.60  | 4.00  | 101.60 | 43     | 19.50  |
|      |     | 2500  | 4.50  | 114.80 | 9.25  | 235.00  | 4.12  | 104.70 | 54     | 24.50  |
| 5    | 125 | 150   | 5.62  | 142.80 | 7.75  | 197.00  | 3.38  | 86.00  | 27     | 12.20  |
|      |     | 300   | 5.62  | 142.80 | 8.50  | 216.00  | 3.38  | 86.00  | 35     | 15.90  |
|      |     | 600   | 5.62  | 142.80 | 9.50  | 241.00  | 4.125 | 105.00 | 50     | 22.70  |
| 6    | 150 | 150   | 6.625 | 168.00 | 8.75  | 222.00  | 3.875 | 98.55  | 35     | 16.00  |
|      |     | 300   | 6.625 | 168.00 | 9.875 | 251.00  | 3.875 | 98.55  | 45     | 20.00  |
|      |     | 600   | 6.625 | 168.00 | 10.50 | 267.00  | 5.375 | 136.70 | 80     | 36.00  |
|      |     | 900   | 6.625 | 168.00 | 11.38 | 289.00  | 6.25  | 158.80 | 115    | 52.00  |
|      |     | 1500  | 6.625 | 168.00 | 11.13 | 282.60  | 6.25  | 158.80 | 110    | 50.00  |
|      |     | 2500  | 6.625 | 168.00 | 12.50 | 318.00  | 6.25  | 158.80 | 190    | 86.00  |
| 8    | 200 | 150   | 8.625 | 219.30 | 11.00 | 279.00  | 5.00  | 127.00 | 70     | 32.00  |
|      |     | 300   | 8.625 | 219.30 | 12.13 | 308.00  | 5.00  | 127.00 | 82     | 37.00  |
|      |     | 600   | 8.625 | 219.30 | 12.64 | 321.00  | 6.50  | 165.10 | 135    | 61.00  |
|      |     | 900   | 8.625 | 219.30 | 14.13 | 358.80  | 8.125 | 206.30 | 229    | 104.00 |
|      |     | 1500  | 8.625 | 219.30 | 13.88 | 352.40  | 8.125 | 206.00 | 219    | 99.00  |
|      |     | 2500  | 8.625 | 219.30 | 15.25 | 387.00  | 8.125 | 206.00 | 285    | 129.00 |
| 10   | 250 | 150   | 10.75 | 273.10 | 13.38 | 340.00  | 5.75  | 146.00 | 106    | 48.00  |
|      |     | 300   | 10.75 | 273.10 | 14.25 | 362.00  | 5.75  | 146.00 | 125    | 57.00  |
|      |     | 600   | 10.75 | 273.10 | 15.75 | 400.00  | 8.375 | 212.90 | 238    | 108.00 |
|      |     | 900   | 10.75 | 273.10 | 17.13 | 435.00  | 9.50  | 241.30 | 388    | 176.00 |
|      |     | 1500  | 10.75 | 273.10 | 17.13 | 435.00  | 9.75  | 247.70 | 397    | 180.00 |
|      |     | 2500  | 10.75 | 273.10 | 18.75 | 476.00  | 10.00 | 254.00 | 502    | 228.00 |
| 12   | 300 | 150   | 12.75 | 324.00 | 16.13 | 410.00  | 7.12  | 180.80 | 172    | 78.00  |
|      |     | 300   | 12.75 | 324.00 | 16.13 | 422.00  | 7.12  | 180.80 | 200    | 91.00  |
|      |     | 600   | 12.75 | 324.00 | 18.00 | 457.00  | 9.00  | 228.60 | 333    | 151.00 |
|      |     | 900   | 12.75 | 324.00 | 19.63 | 498.50  | 11.50 | 292.10 | 540    | 245.00 |
|      |     | 1500  | 12.75 | 324.00 | 20.50 | 520.70  | 12.00 | 305.00 | 725    | 329.00 |
|      |     | 2500  | 12.75 | 324.00 | 21.63 | 549.00  | 12.00 | 305.00 | 963    | 437.00 |
| 14   | 350 | 150   | 14.00 | 355.60 | 17.75 | 451.00  | 7.25  | 184.20 | 200    | 91.00  |
|      |     | 300   | 14.00 | 355.60 | 19.13 | 486.00  | 8.75  | 222.30 | 325    | 147.00 |
|      |     | 600   | 14.00 | 355.60 | 19.38 | 492.00  | 10.75 | 273.00 | 455    | 206.00 |
|      |     | 900   | 14.00 | 355.60 | 20.50 | 520.70  | 14.00 | 355.60 | **     | **     |
|      |     | 1500  | 14.00 | 355.60 | 22.75 | 577.90  | 14.00 | 355.60 | **     | **     |
| 16   | 400 | 150   | 16.00 | 406.00 | 20.25 | 514.00  | 7.50  | 190.50 | 275    | 125.00 |
|      |     | 300   | 16.00 | 406.00 | 21.25 | 540.00  | 9.12  | 213.60 | 415    | 188.00 |
|      |     | 600   | 16.00 | 406.00 | 22.25 | 565.00  | 12.00 | 304.80 | 640    | 290.00 |
|      |     | 900   | 16.00 | 406.00 | 22.63 | 574.70  | 15.12 | 384.00 | **     | **     |
|      |     | 1500  | 16.00 | 406.00 | 25.25 | 641.00  | 15.12 | 384.00 | **     | **     |
| 18   | 450 | 150   | 17.00 | 433.00 | 21.63 | 549.00  | 8.00  | 203.20 | 315    | 143.00 |
|      |     | 300   | 17.00 | 433.00 | 23.50 | 597.00  | 10.38 | 263.60 | 555    | 252.00 |
|      |     | 600   | 17.00 | 433.00 | 24.13 | 613.00  | 14.25 | 362.00 | 890    | 404.00 |
|      |     | 900   | 17.00 | 433.00 | 25.13 | 638.20  | 17.75 | 450.90 | 1318   | 598.00 |
|      |     | 1500  | 18.00 | 457.00 | 27.75 | 705.00  | 18.44 | 468.00 | **     | **     |
| 20   | 500 | 150   | 20.00 | 508.00 | 23.88 | 606.00  | 8.62  | 219.00 | 435    | 197.00 |
|      |     | 300   | 20.00 | 508.00 | 25.75 | 654.00  | 11.50 | 292.10 | 725    | 329.00 |
|      |     | 600   | 20.00 | 508.00 | 26.88 | 683.00  | 14.50 | 368.30 | 1120   | 508.00 |
|      |     | 900   | 17.00 | 433.00 | 25.13 | 638.20  | 17.75 | 450.90 | 1426   | 647.00 |
| 24   | 600 | 150   | 24.00 | 610.00 | 28.25 | 718.00  | 8.75  | 222.00 | 620    | 281.00 |
|      |     | 300   | 24.00 | 610.00 | 30.50 | 775.00  | 12.50 | 318.00 | 1100   | 499.00 |
|      |     | 600   | 24.00 | 610.00 | 31.13 | 791.00  | 17.25 | 438.00 | 2040   | 925.00 |
| 30   | 750 | 150   | 30.00 | 762.00 | 34.75 | 883.00  | 13.00 | 330.00 | 1230   | 558.00 |
|      |     | 300   | 30.00 | 762.00 | 37.50 | 953.00  | 15.69 | 398.00 | 2050   | 930.00 |
| 36   | 900 | 150   | 36.00 | 915.00 | 41.25 | 1048.00 | 15.25 | 387.00 | 2017   | 915.00 |

**FIG. 282-CS-150 CLASS 150 FLANGED ENDS BOLTED BONNET WCB BODY & BONNET  
13Cr/HF TRIM**

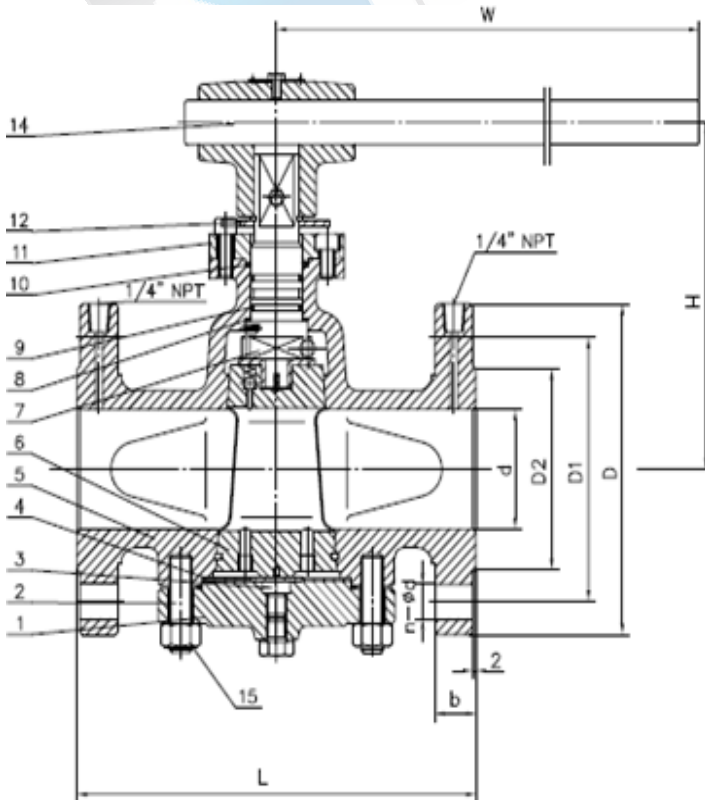


**Features:**

- Flange dimensions: ANSI B16.5
- Face-to-Face dimensions:
- ANSI B16.10 Testing: API 598
- Design: API 6D

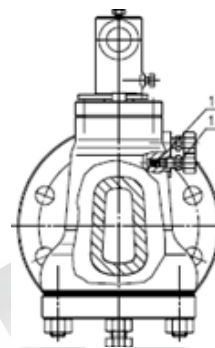
**Materials List:**

| No. | Part Name         | Specification  |
|-----|-------------------|----------------|
| 1   | Cover             | ASTM A216 WCB  |
| 2   | Cover bolt        | ASTM A193 B7   |
| 3   | Block             | ASTM A276 420  |
| 4   | Gasket            | Graphite+SS304 |
| 5   | Body              | ASTM A216 WCB  |
| 6   | Plug              | ASTM A216 WCB  |
| 7   | Stem              | ASTM A182 F6a  |
| 8   | Stem seat         | PTFE           |
| 9   | O-Ring            | VITON          |
| 10  | Stem packing      | PTFE           |
| 11  | Gland flange      | ASTM A105      |
| 12  | Stop plate        | Carbon Steel   |
| 13  | Injection fitting | AISI 1025      |
| 14  | Lever             | Carbon Steel   |
| 15  | Nut               | ASTM A194 2H   |
| 16  | Check Valve       | AISI 1025      |



**Note:**

Other body materials and trims are available upon request.



**Dimensions:**

| Size |     | d     |     | D     |     | D1    |       | D2    |     | b    |    | H     |     | L     |     | Weight |     | W     |     |
|------|-----|-------|-----|-------|-----|-------|-------|-------|-----|------|----|-------|-----|-------|-----|--------|-----|-------|-----|
| in   | mm  | in    | mm  | in    | mm  | in    | mm    | in    | mm  | in   | mm | in    | mm  | in    | mm  | lbs    | kgs | In    | mm  |
| 3    | 80  | 2.99  | 76  | 7.48  | 190 | 6.00  | 152.5 | 5.00  | 127 | 0.75 | 19 | 8.07  | 205 | 7.99  | 203 | 72.75  | 33  | 19.69 | 500 |
| 4    | 100 | 4.02  | 102 | 9.02  | 229 | 7.50  | 190.5 | 6.18  | 157 | 0.94 | 24 | 9.09  | 231 | 9.02  | 229 | 105.80 | 48  | 27.56 | 700 |
| 10   | 250 | 10.00 | 254 | 15.98 | 406 | 14.00 | 362   | 12.76 | 324 | 1.12 | 31 | 12.99 | 330 | 20.98 | 533 | 377.00 | 171 | 31.50 | 800 |

**FIG. 276-CS-150:**

**CLASS 150 FLANGED ENDS BOLTED BONNET WCB BODY & BONNET TRIM 8**



**Features:**

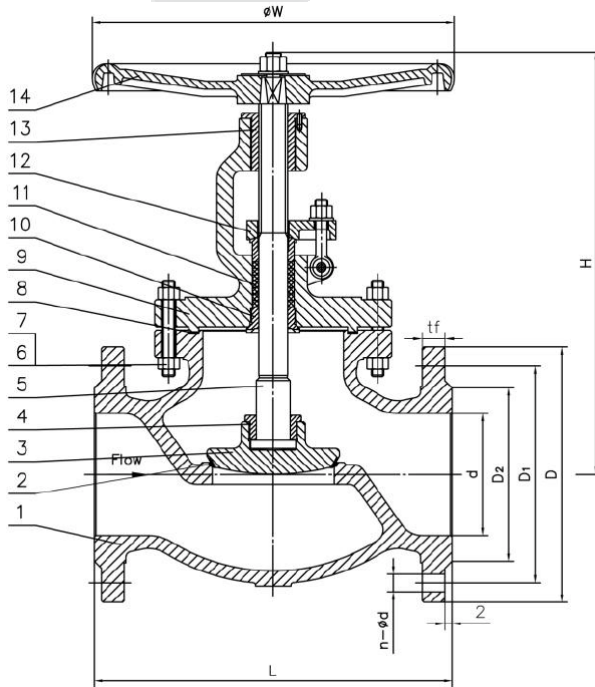
- Flange dimensions: ANSI B16.5
- Face-to-Face dimensions: ANSI B16.10
- Temperature and Pressure: ASME B16.34
- Testing: API 598
- Design: BS 1873, B16.34

**Materials List:**

| No. | Part Name        | Specification      |
|-----|------------------|--------------------|
| 1   | Body             | ASTM A216 WCB      |
| 2   | Valve Seal       | INT+STL6           |
| 3   | Disc             | ASTM A105+13Cr     |
| 4   | Disc Nut         | Carbon Steel       |
| 5   | Stem             | ASTM A182 F6a      |
| 6   | Bonnet Bolt      | ASTM A193 B7       |
| 7   | Bonnet Nut       | ASTM A194 2H       |
| 8   | Winded Gasket    | Graphite + SS      |
| 9   | Bonnet           | ASTM A216 WCB      |
| 10  | Backseat Bushing | ASTM A276 420      |
| 11  | Stem Packing     | Flexible Graphite  |
| 12  | Gland Flange     | ASTM A216 WCB      |
| 13  | Stem Nut         | Copper Alloy       |
| 14  | Hand Wheel       | ASTM A536 60-40-18 |

**Note:**

Other body materials and trims are available upon request

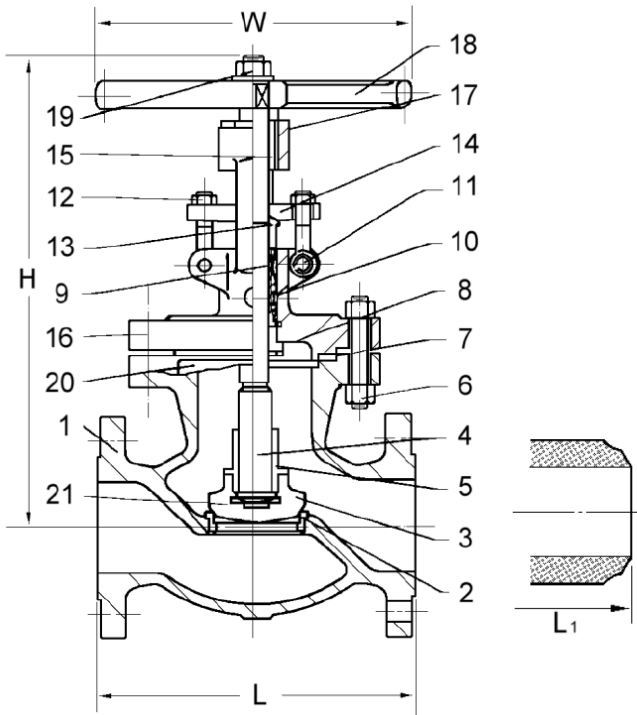


**Dimensions:**

| Size |     | L    |     | H     |     | ØW    |     | d     |     | D     |     | D1    |        | D2    |        | b    |       | n-Ød   |
|------|-----|------|-----|-------|-----|-------|-----|-------|-----|-------|-----|-------|--------|-------|--------|------|-------|--------|
| in   | mm  | in   | mm  | in    | mm  | in    | mm  | in    | mm  | in    | mm  | in    | mm     | in    | mm     | in   | mm    |        |
| 2    | 50  | 8    | 203 | 12.91 | 328 | 8.00  | 200 | 1.97  | 50  | 5.98  | 152 | 4.75  | 120.70 | 3.62  | 92.00  | 0.63 | 16.00 | 4-Ø19  |
| 3    | 80  | 9 ½  | 241 | 14.69 | 373 | 10.00 | 250 | 2.99  | 76  | 7.48  | 190 | 6.00  | 152.40 | 5.00  | 127.00 | 0.77 | 19.50 | 4-Ø19  |
| 4    | 100 | 11 ½ | 292 | 15.75 | 400 | 12.00 | 300 | 6.00  | 150 | 9.02  | 229 | 7.50  | 190.50 | 6.18  | 157.00 | 0.95 | 24.00 | 8-Ø19  |
| 6    | 150 | 16   | 406 | 20.79 | 528 | 13.78 | 350 | 6.00  | 150 | 10.98 | 279 | 9.50  | 241.30 | 8.50  | 215.90 | 1.02 | 25.90 | 8-Ø22  |
| 8    | 200 | 19 ½ | 495 | 25.91 | 658 | 15.75 | 400 | 8.00  | 200 | 13.50 | 343 | 11.75 | 298.50 | 10.63 | 269.90 | 1.14 | 29.00 | 8-Ø22  |
| 10   | 250 | 24 ½ | 622 | 30.51 | 775 | 17.72 | 450 | 10.00 | 250 | 15.95 | 405 | 14.25 | 362.00 | 12.75 | 323.80 | 1.20 | 30.60 | 12-Ø25 |
| 12   | 300 | 27 ½ | 698 | 34.65 | 880 | 23.62 | 600 | 12.00 | 300 | 19.02 | 483 | 17.00 | 431.80 | 15.00 | 381.00 | 1.27 | 32.20 | 12-Ø25 |

**FIG. 276-CS-300:**

**CLASS 300 FLANGED ENDS BOLTED BONNET WCB BODY & BONNET  
13Cr/HF TRIM**



**Features:**

- Flange dimensions: ANSI B16.5
- Butt weld dimensions: ANSI B16.25
- Face-to-Face dimensions: ANSI B16.10
- Testing: API 598
- Design: API 600

**Materials List:**

| No. | Part Name     | Specification       |
|-----|---------------|---------------------|
| 1   | Body          | A216 WCB            |
| 2   | Seat ring     | A105 HF             |
| 3   | Disc          | A276 – 410, 420     |
| 4   | Stem          | A276 – 410, 420     |
| 5   | Disc nut      | A276 – 420, 420     |
| 6   | Stud/nut      | B7/2H               |
| 7   | Gasket        | 304SS Wound Grafoil |
| 8   | Back seat     | A276 – 410, 420     |
| 9   | Packing       | Grafoil             |
| 10  | Lantern*      | A276-410, 420       |
| 11  | Pin           | Carbon steel        |
| 12  | Eye bolt/nut  | B7/2H               |
| 13  | Gland         | A276-410, 420       |
| 14  | Gland flange  | Carbon steel        |
| 15  | Stem nut      | D2                  |
| 16  | Bonnet        | A216 WCB            |
| 17  | Set screw     | Carbon steel        |
| 18  | Handwheel     | Ductile iron        |
| 19  | Handwheel nut | Carbon steel        |
| 20  | Nameplate     | 321SS               |
| 21  | Thrust plate  | A276-420            |

**Note:**

- Standard is Plug style disc w/ threaded seat ring.
- \* Supplied only on special order
- Other body materials and trims are available upon request

**Dimensions:**

| Size |     | L – L1 (RF/BW) |     | H (open) |      | W       |     | Weight RF |     | Weight BW |     |
|------|-----|----------------|-----|----------|------|---------|-----|-----------|-----|-----------|-----|
| in   | mm  | in             | mm  | in       | mm   | in      | mm  | lb        | kg  | lbs       | kgs |
| 2    | 50  | 10 ½           | 267 | 15 1/16  | 398  | 7 5/8   | 200 | 68        | 31  | 57        | 26  |
| 2 ½  | 65  | 11 ½           | 292 | 17 1/8   | 436  | 9 5/8   | 250 | 95        | 43  | 84        | 38  |
| 3    | 80  | 12 ½           | 318 | 18 3/16  | 462  | 9 5/8   | 250 | 125       | 57  | 97        | 44  |
| 4    | 100 | 14             | 356 | 22 1/16  | 560  | 13 3/4  | 350 | 189       | 86  | 150       | 68  |
| 5    | 125 | 15 ¾           | 400 | 24 3/8   | 620  | 15 ¾    | 400 | 286       | 130 | 242       | 110 |
| 6    | 150 | 17 ½           | 444 | 27 3/16  | 694  | 17 ¾    | 450 | 370       | 168 | 304       | 138 |
| 8    | 200 | 22             | 559 | 38 5/8   | 982  | 22 1/16 | 560 | 616       | 280 | 502       | 228 |
| 10   | 250 | 24 ½           | 622 | 41 3/16  | 1049 | 24      | 610 | 847       | 385 | 724       | 329 |
| 12   | 300 | 28             | 711 | 44 ½     | 1130 | 30      | 760 | 1593      | 724 | 1360      | 618 |

**FIG. 278-CS-150:**

**CLASS 150 SWING CHECK VALVE FLANGED ENDS BOLTED COVER  
WCB BODY & BONNET 13Cr/HF TRIM**

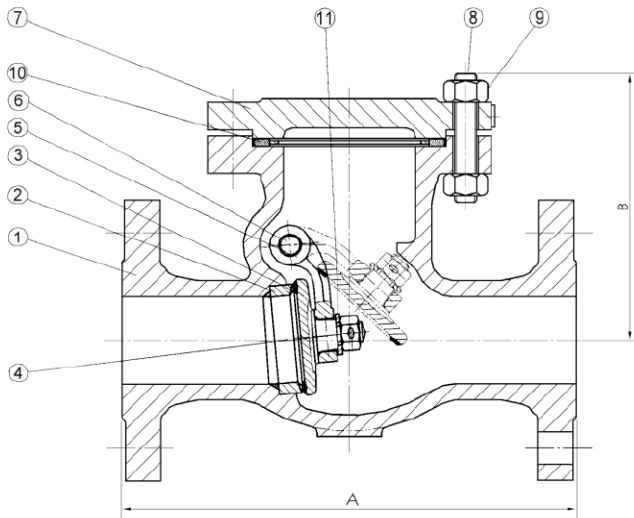


**Features:**

- Flange dimensions: ANSI B16.5
- Face-to-Face dimensions: ANSI B16.10
- Testing: API 598
- Design: API 600

**Materials List:**

| No. | Part Name | Specification           |
|-----|-----------|-------------------------|
| 1   | Body      | A216 WCB                |
| 2   | Seat ring | 105 + HF                |
| 3   | Disc      | A216 WCB + 13Cr overlay |
| 4   | Disc nut  | A276 – 410SS            |
| 5   | Hinge     | A216 WCB                |
| 6   | Hinge pin | A276 – 410SS            |
| 7   | Cover     | A216 WCB                |
| 8   | Stud      | B7                      |
| 9   | Nut       | 2H                      |
| 10  | Gasket    | 304SS Wound Grafoil     |
| 11  | Washer    | Carbon steel            |



**Note:**

- Standard valve has a welded seat ring
- Other body materials and trims are available upon request

**Dimensions:**

| Size |     | L     |      | H     |      | Weight |      |
|------|-----|-------|------|-------|------|--------|------|
| in   | mm  | in    | mm   | in    | mm   | lbs    | kgs  |
| 2    | 50  | 8.00  | 203  | 5.88  | 150  | 40     | 18   |
| 2 ½  | 65  | 8.50  | 216  | 6.63  | 168  | 50     | 23   |
| 3    | 80  | 9.50  | 241  | 7.00  | 180  | 68     | 31   |
| 4    | 100 | 11.50 | 292  | 8.25  | 210  | 102    | 46   |
| 5    | 125 | 13.00 | 330  | 9.00  | 230  | 133    | 60   |
| 6    | 150 | 14.00 | 356  | 10.25 | 275  | 180    | 82   |
| 8    | 200 | 19.50 | 495  | 13.50 | 340  | 305    | 139  |
| 10   | 250 | 24.50 | 622  | 14.00 | 355  | 455    | 207  |
| 12   | 300 | 27.50 | 698  | 16.13 | 410  | 675    | 307  |
| 14   | 350 | 31.00 | 787  | 18.75 | 475  | 875    | 398  |
| 16   | 400 | 34.00 | 864  | 21.75 | 552  | 1300   | 591  |
| 18   | 450 | 38.50 | 978  | 23.50 | 600  | 1450   | 659  |
| 20   | 500 | 38.50 | 978  | 26.00 | 660  | 1980   | 900  |
| 24   | 600 | 51.00 | 1295 | 29.13 | 740  | 2500   | 1136 |
| 30   | 750 | 60.00 | 1524 | 40.75 | 1035 | 4660   | 2118 |

**FIG. 278-CS-300:**

**CLASS 300 SWING CHECK VALVE FLANGED ENDS BOLTED COVER  
WCB BODY & BONNET 13Cr/HF TRIM**



**Features:**

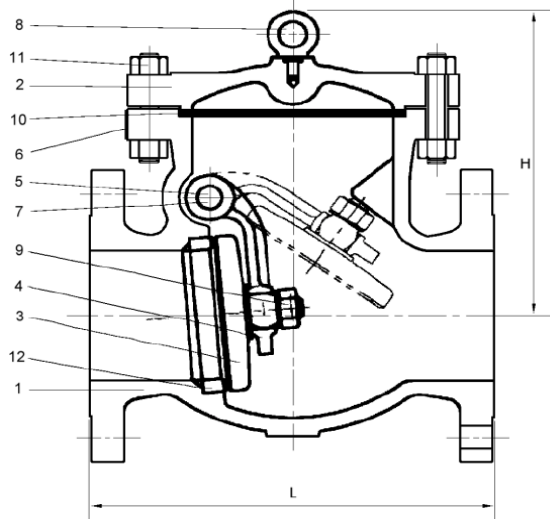
- Flange dimensions: ANSI B16.5
- Face-to-Face dimensions: ANSI B16.10
- Testing: API 598
- Design: API 600

**Materials List:**

| No. | Part Name  | Specification           |
|-----|------------|-------------------------|
| 1   | Body       | A216 WCB                |
| 2   | Cover      | A216 WCB                |
| 3   | Disc       | A216 WCB + 13Cr overlay |
| 4   | Hinge      | A216 WCB                |
| 5   | Hinge Pin  | A276 – 410              |
| 6   | Name Plate | 304SS                   |
| 7   | Set Screw  | A276 – 410              |
| 8   | Hook Screw | Carbon steel            |
| 9   | Disc Nut   | A276 – 410              |
| 10  | Gasket     | 304 Wound Grafoil       |
| 11  | Stud/nut   | B7/2H                   |
| 12  | Seat Ring  | A105 + HF               |

**Note:**

- Standard valve has a welded seat ring
- Other body materials and trims are available upon request



**Dimensions:**

| Size |     | L    |      | H    |     | Weight |      |
|------|-----|------|------|------|-----|--------|------|
| in   | mm  | in   | mm   | in   | mm  | lbs    | kgs  |
| 2    | 50  | 10 ½ | 267  | 7    | 180 | 66     | 30   |
| 2 ½  | 65  | 11 ½ | 292  | 7 ¼  | 185 | 90     | 41   |
| 3    | 80  | 12 ½ | 318  | 8 ¼  | 210 | 110    | 50   |
| 4    | 100 | 14   | 356  | 10 ⅝ | 270 | 161    | 73   |
| 5    | 125 | 15 ¾ | 400  | 13 ½ | 345 | 200    | 91   |
| 6    | 150 | 17 ½ | 444  | 14 ¼ | 360 | 330    | 150  |
| 8    | 200 | 21   | 533  | 14 ½ | 370 | 510    | 232  |
| 10   | 250 | 24 ½ | 622  | 15 ⅝ | 385 | 774    | 352  |
| 12   | 300 | 28   | 711  | 17 ¼ | 440 | 1151   | 523  |
| 14   | 350 | 33   | 838  | 20 ½ | 520 | 1500   | 682  |
| 16   | 400 | 34   | 864  | 21 ¾ | 554 | 1850   | 841  |
| 18   | 450 | 38 ½ | 978  | 23 ¼ | 590 | 2255   | 1025 |
| 20   | 500 | 40   | 1016 | 24 ¼ | 614 | 2904   | 1320 |
| 24   | 600 | 53   | 1346 | 28   | 710 | 4314   | 1961 |
| 30   | 750 | 62 ¾ | 1594 | 34   | 865 | 7194   | 3270 |