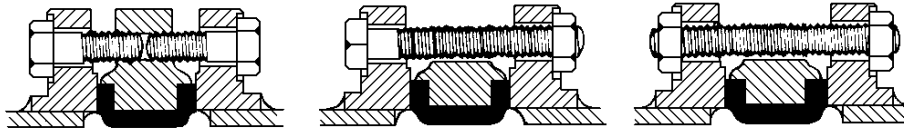


**Studs & Bolts for Mounting Butterfly Valves 2" to 24"  
Between ANSI Class 125/150 Flanges**



Cap Screws

Machine Bolts

Stud Bolts

**Note:** Cap screws must be short enough to ensure that they do not touch each other after tightening to avoid cracking the lug.

**TABLE I**

Wafer body valve using Heavy Hex Machine bolts with 1 Heavy Hex nut each														
	2"	2½"	3"	4"	5"	6"	8"	10"	12"	14"	16"	18"	20"	24"
Diameter	5/8	5/8	5/8	5/8	¾	¾	¾	7/8	7/8	1	1	1 1/8	1 1/8	1 1/4
Length	4¼	4½	4¾	5	5¼	5¼	6	6¼	6¾	7¼	8¼	9	10	12
Quantity	4	4	4	8	8	8	8	12	12	12	16	16	20	20

**TABLE II**

Wafer body valve using Stud Bolts or All Thread cross bolting with 2 Heavy Hex nut each														
	2"	2½"	3"	4"	5"	6"	8"	10"	12"	14"	16"	18"	20"	24"
Diameter	5/8	5/8	5/8	5/8	¾	¾	¾	7/8	7/8	1	1	1 1/8	1 1/8	1 1/4
Length	5	5¼	5½	5¾	6¼	6¼	7	7¼	7¾	8½	9½	10¼	11¼	13
Quantity	4	4	4	8	8	8	8	12	12	12	16	16	20	20

**TABLE III**

Lug body valve with Tapped holes using Heavy Hex Cap Screws (National Coarse Threads)														
	2"	2½"	3"	4"	5"	6"	8"	10"	12"	14"	16"	18"	20"	24"
Diameter	5/8	5/8	5/8	5/8	¾	¾	¾	7/8	7/8	1	1	1 1/8	1 1/8	1 1/4
Length	1½	1½	1¾	1¾	1¾	1¾	2¼	2¼	2½	2¾	3¼	3½	4	4¼
Quantity	8	8	8	16	16	16	16	24	24	24	32	32	40	40